

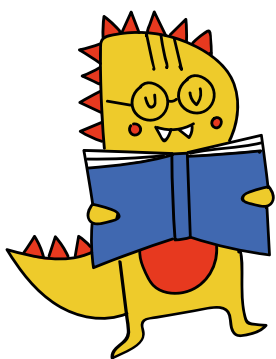
AUGUST  
TO  
DECEMBER

# HOMework

## in year 6



At Desford Community Primary School, we understand that family life away from school is very busy and see the other experiences that our children have in their spare time as valuable enrichment to their development. Our approach to homework is therefore focussed on spending a little bit of time every week rehearsing the core skills that will have a positive impact on learning in school. Homework progresses in line with these principles from EYFS to Year 6, with some increases in expectations to help to prepare the children for their transition to high school.



## ENGLISH reading

Please listen to your child read their allocated book:

**3-5 TIMES PER WEEK**  
**for 20 MINS EACH SESSION**

Also share a range of other books at home with your child, including their school library book.



## ENGLISH spelling

**PLAY 5 SPELLING SHED GAMES PER WEEK**

A list of approximately 10 new spellings linked to learning in school, are added every week. Common exception (tricky) words are also added as they taught in school.



## MATHS times tables

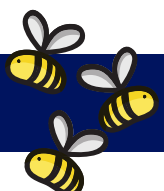
Knowing your times tables impacts significantly on general fluency and general understanding of numbers in maths.

**PLEASE PLAY FOR 30 MINS EVERY WEEK**  
**A VARIETY OF 'JAMMING' & 'GARAGE' GAMES**



An additional ENGLISH, MATHS or TOPIC work will be set each week.

OPTIONAL WIDER CURRICULUM TASKS WILL BE SENT HOME HALF-TERMLY



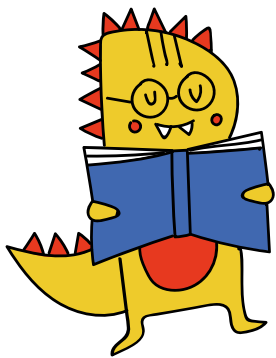
JANUARY  
TO  
MAY

# HOMework

## in year 6



At Desford Community Primary School, we understand that family life away from school is very busy and see the other experiences that our children have in their spare time as valuable enrichment to their development. Our approach to homework is therefore focussed on spending a little bit of time every week rehearsing the core skills that will have a positive impact on learning in school. Homework progresses in line with these principles from EYFS to Year 6, with some increases in expectations to help to prepare the children for their transition to high school.



## ENGLISH reading

Please listen to your child read their allocated book:

**3-5 TIMES PER WEEK**  
**for 20 MINS EACH SESSION**

Sharing a range of other books at home with your child,  
or encouraging them to read regularly independently.



## ENGLISH spelling

**PLAY 5 SPELLING SHED GAMES PER WEEK**

A list of approximately 10 new spellings linked to learning in school, are added every week. Common exception (tricky) words are also added as they taught in school.



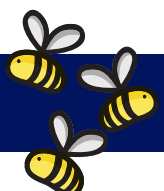
## MATHS times tables

Knowing your times tables impacts significantly on general fluency and general understanding of numbers in maths.

**PLEASE PLAY FOR 30 MINS EVERY WEEK**  
**A VARIETY OF 'JAMMING' & 'GARAGE' GAMES**



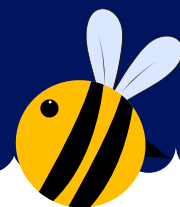
Additional ENGLISH AND MATHS SATs revision work will be set each week.  
OPTIONAL WIDER CURRICULUM TASKS WILL BE SENT HOME HALF-TERMLY



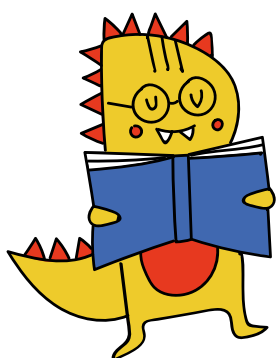
MAY  
TO  
JULY

# HOMework

## in year 6



At Desford Community Primary School, we understand that family life away from school is very busy and see the other experiences that our children have in their spare time as valuable enrichment to their development. Our approach to homework is therefore focussed on spending a little bit of time every week rehearsing the core skills that will have a positive impact on learning in school. Homework progresses in line with these principles from EYFS to Year 6, with some increases in expectations to help to prepare the children for their transition to high school.

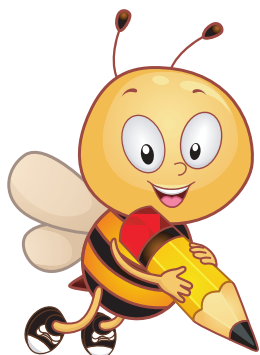


### ENGLISH reading

Please listen to your child read their allocated book:

**3-5 TIMES PER WEEK**  
**for 20 MINS EACH SESSION**

Sharing a range of other books at home with your child,  
or encouraging them to read regularly independently.



### ENGLISH spelling

**PLAY 5 SPELLING SHED GAMES PER WEEK**

A list of approximately 10 new spellings linked to learning in school, are added every week. Common exception (tricky) words are also added as they taught in school.



### MATHS times tables

Knowing your times tables impacts significantly on general fluency and general understanding of numbers in maths.

**PLEASE PLAY FOR 30 MINS EVERY WEEK**  
**A VARIETY OF 'JAMMING' & 'GARAGE' GAMES**



Additional secondary school transition and project work will be set in the last half term.

OPTIONAL WIDER CURRICULUM TASKS WILL BE SENT HOME HALF-TERMLY

